

# The logical solution in produced water management.

Reduce operational headaches with the only wellhead solution designed to evaporate up to 90% of produced water on-site. Logic Energy Solutions' **Produced Water Evaporator** features proprietary technology that lets you address inflated water transportation and disposal costs in the most efficient, economical and environmentally- responsible way possible.

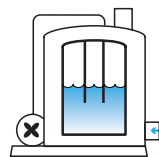
Significantly reduce operational and financial exposure through:

- Reduction of risky, high-cost handling.
- Increased production through shut-down avoidance.
- Improved cost management predictability.

Logic Energy Solutions is the exclusive license holder for the oil and gas application of **SubCom® (submerged combustion) heat technology**. Key benefits of this proprietary technology for the evaporation of produced water include:

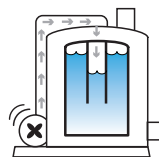
- Smallest footprint of any evaporation solution.
- Ability to evaporate high-TDS produced water.
- No heat transfer surfaces to become fouled.
- Simple and operator-friendly for easy training.

Logic Energy Solutions' evaporation process significantly reduces the headaches associated with produced water management in five efficient, economical steps:



**1**

On-site produced water storage feeds the evaporation tank



**2**

PLC controls will ready the evaporator once storage tank reaches critical level



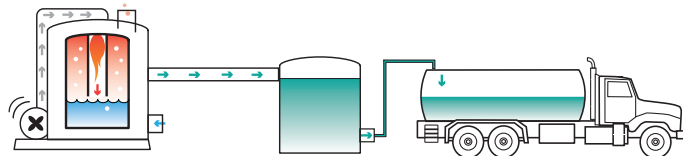
**3**

Combustion chamber is purged and the burner ignites automatically



**4**

Water vapor generated in the evaporation tank is discharged



**5a.**

As water is evaporated, more water is fed into the tank

**5b.**

Remaining solids are disposed of off-site

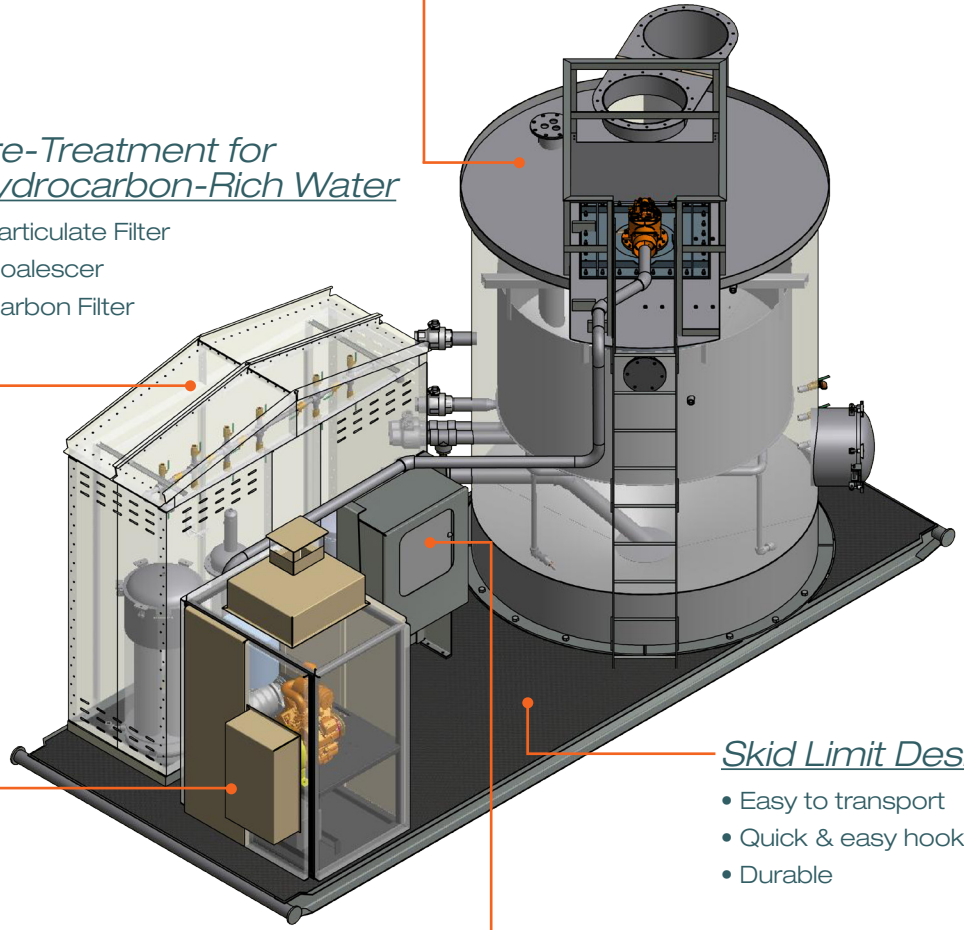
While the process is simple, the technology is advanced. For additional information and specifications on our proprietary **Produced Water Evaporator**, please visit us at [www.logicenergysolutions.com](http://www.logicenergysolutions.com).

## Pre-Treatment for Hydrocarbon-Rich Water

- Particulate Filter
- Coalescer
- Carbon Filter

## Evaporation Tank

- Rated Capacity: 130 bbl/d
- Rated Heat Duty: 2 MMBTU/h
- Construction: 316L SS



## Skid Limit Design

- Easy to transport
- Quick & easy hook-up
- Durable

## Combustion Air Blower

- Positive Displacement blower
- NG fueled engine
- Powers all electrical components
- Cabinet constructed using noise-dampening material

## Process Control System

- Allen Bradley PLC
- Pre-programmed:
  - Start-up sequence
  - High/low level shutdowns
  - High/low temperature shutdowns
- Captures and logs operating history
- Remote SCADA capability
- NEMA-4 rated panel

## Dimensions

Height: 147"    Length: 240"  
 Width: 102"    Weight: 12,000 lbs total

