



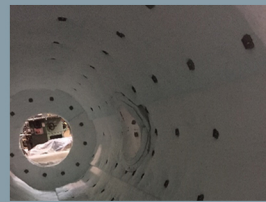
INPROHEAT
INDUSTRIES LTD.

Engineered Materials Group

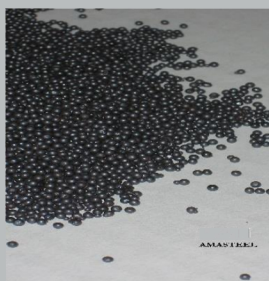
Trust | Expertise | Innovation

High Temperature Refractory Materials

Ceramic fibre products, alumina castables, gunning products, plastic rams, cements, mortars, insulating firebricks, basic bricks, alumina bricks and crucibles.



Abrasives



**ERVIN
AMASTEEL**

Inproheat is the Western Canadian master distributor for Ervin Amasteel shot and grit.

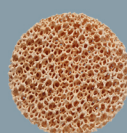
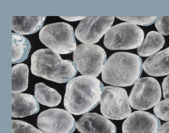
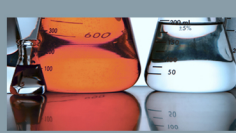
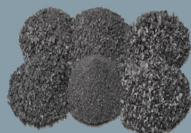
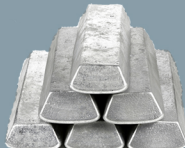
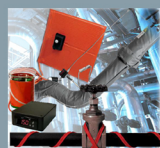
Superwool



Inproheat offers Morgan Thermal Ceramics Superwool made from low bio persistence fibre.

Specialty Chemicals, Sands, Coatings, Minerals, Electrical Process Heat Equipment

Boron nitride, carbon products, colloidal silica, fused silica sand, synthetic olivine sand releases, alloys, ingots, specialty lubricants, heat transfer fluids, iron oxides, Wedron silica sands, temperature control and freeze protection.



Serving the diverse Western Canadian industrial sector.

Inproheat EMG Locations Across Western Canada

Vancouver (Head Office)

1455 Crown Street.
North Vancouver, BC V7J 1G4
(604) 254-0461

Edmonton

1305 – 77th. Ave. N.W.
Edmonton, AB T6P 1M8
(780) 440-2930

Saskatoon

(306)-250-7828

Winnipeg

10 Hutchings Street
Winnipeg, MB R2X 2X1
(204) 694-2691

1-888-684-6776 | Inproheat.com/emg | info@inproheat.com